

**National Assembly for Wales**  
Research paper

# Unemployment Briefing

April 2014

Cynulliad  
Cenedlaethol  
Cymru

National  
Assembly for  
Wales



Research  
Service

The National Assembly for Wales is the democratically elected body that represents the interests of Wales and its people, makes laws for Wales and holds the Welsh Government to account.

The Research Service provides expert and impartial research and information to support Assembly Members and committees in fulfilling the scrutiny, legislative and representative functions of the National Assembly for Wales.

Research Service briefings are compiled for the benefit of Assembly Members and their support staff. Authors are available to discuss the contents of these papers with Members and their staff but cannot advise members of the general public. We welcome comments on our briefings; please post or email to the addresses below.

An electronic version of this paper can be found on the National Assembly website at:  
[www.assemblywales.org/research](http://www.assemblywales.org/research)

Further hard copies of this paper can be obtained from:

Research Service  
National Assembly for Wales  
Cardiff Bay  
CF99 1NA

Email: [Research.Service@wales.gov.uk](mailto:Research.Service@wales.gov.uk)  
Twitter: @SeneddResearch  
Blog: [assemblyinbrief.wordpress.com](http://assemblyinbrief.wordpress.com)

© National Assembly for Wales Commission Copyright 2014

The text of this document may be reproduced free of charge in any format or medium providing that it is reproduced accurately and not used in a misleading or derogatory context. The material must be acknowledged as copyright of the National Assembly for Wales Commission and the title of the document specified.

Enquiry no: 14/1129  
Paper number: 14/017

**National Assembly for Wales**  
Research paper

## Unemployment Briefing

April 2014

Gareth Thomas

This briefing paper provides a statistical overview of unemployment trends.

Information is included on Assembly constituencies, Wales and UK nations and regions.

Cynulliad  
Cenedlaethol  
Cymru

National  
Assembly for  
Wales



Research  
Service



# Unemployment Briefing: April 2014

## *Introduction*

Unemployment statistics are published each month by the Office for National Statistics (ONS). This paper is released shortly after the ONS data and aims to provide a brief summary of the latest unemployment situation in Wales and the UK.

**Section 1 contains headline figures and analysis relating to the International Labour Organisation (ILO) and claimant count measures. Additional information is provided in sections 2 to 7. These sections cover comparative information on unemployment rates between genders, age groups, and between Wales and the other UK nations and regions. Additionally, information and analysis on long-term unemployment, and the latest unemployment figures for Assembly Constituencies is provided.**

The Research Service is able to provide **Assembly Members and their staff** with more detailed analyses in relation to unemployment and long-term labour market trends on request. If you would like us to do this, please contact Gareth Thomas on 029 2089 8917 or at [garethdavid.thomas@wales.gov.uk](mailto:garethdavid.thomas@wales.gov.uk)



# 1. Headline Figures

**Table 1.1: Headline unemployment figures (seasonally adjusted)**

Measure	Latest figure	Change since previous	
		Month/quarter	Year
Number of ILO unemployed people in Wales (December 2013 - February 2014)	102,000	↓ Decrease of 6,000 since last quarter	↓ Decrease of 19,000
ILO unemployment rate in Wales (December 2013 - February 2014)	6.8%	↓ Decrease of 0.4 percentage points since last quarter	↓ Decrease of 1.4 percentage points
Claimant count in Wales (March 2014)	61,800	↓ Decrease of 1,100 since last month	↓ Decrease of 15,700
Claimant count rate in Wales (March 2014)	4.2%	↓ Decrease of 0.1 percentage points since last month	↓ Decrease of 1.1 percentage points

Source: Office for National Statistics, [Regional Labour Market Statistics - April 2014 Headline indicators for Wales: Table 1 - Summary of LFS headline indicators](#) and [Table 7: Claimant Counts and Rates](#)

## Labour Force Survey and ILO Unemployment

- In December 2013 to February 2014, the male ILO rate was 8.2%, which has decreased from 8.9% since the previous year. The female ILO rate was 5.3%, which has decreased from 7.3% since the previous year. *Figure 2.1;*
- At 6.8%, the ILO unemployment rate in Wales was 0.1 percentage points below the UK rate in December 2013 to February 2014. *Figure 3.1* and
- In January to December 2013, 45,800 people aged 16-24 were ILO unemployed; the ILO rate for 16-24 year olds was 21.3%. *Table 6.1 and Figure 6.1.*

## Claimant count

- In March 2014 18,900 people in Wales had been claiming JSA for over 12 months. This has decreased by 2,600 since the previous March. Of those claiming JSA for over 12 months, 9,800 have been claiming for over 24 months, an increase of 400 since the previous March. *Figure 5.2;*
- The claimant count for the 18-24 age group was 18,890 in March 2014. This has decreased by 820 since the previous month and decreased by 5,400 since the previous March. *Table 6.2;* and
- The Assembly Constituencies with the highest claimant count rates in March 2014 (based on unofficial estimates) were Blaenau Gwent (8.0%) and Merthyr Tydfil and Rhymney (7.2%). The lowest claimant count rate estimates were in Brecon and Radnorshire (2.1%), Ceredigion and Montgomeryshire (both 2.2%). *Table 7.2.*

## ILO Unemployment

The **International Labour Organisation (ILO) definition of unemployment is the primary measure used in the UK and internationally**, and UK figures are derived by the Office for National Statistics (ONS) from the Labour Force Survey. In the UK people who are classed as ILO unemployed are **those who are without a job, are available to start work in the next two weeks, who have been seeking a job in the last four weeks or are waiting to start a job already obtained**.

The **ILO unemployment rate is the number of ILO unemployed people as a percentage of the economically active population** (this includes people who are in employment and those who are defined as ILO unemployed).

## Claimant Count

The **claimant count measures people who are claiming Jobseeker's Allowance (JSA)**. It is lower than the ILO definition, because some unemployed people are either not entitled to claim benefits, or choose not to do so. **It is the most up-to-date unemployment measure, particularly for smaller areas**.

The **claimant count rate** is calculated in three ways in this paper:

- **For all figures and tables except those for age groups and Assembly Constituencies it has been calculated using the workplace based claimant count rate** which is used by the ONS in its Regional Labour Market Statistics publication. **This is the number of JSA claimants resident in an area as a percentage of the number of workforce jobs plus JSA claimants in an area**.
- **For age groups, claimant count rates are calculated by the ONS as a percentage of the population of the relevant age group**. They are not seasonally adjusted, and therefore take no account of factors such as labour market recruitment patterns. They also do not take account of differences in economic activity levels between areas.
- **For Assembly Constituencies, the claimant count rates are calculated unofficially by the Research Service using the same methodology as the House of Commons Library**. They are calculated by expressing the number of JSA claimants as a **percentage of the economically active population aged between 16 and 64 residing in the constituency**. The population figures are estimates based on the 2011 Census. **Following publication of data from the 2011 Census this methodology has changed. Therefore the figures in this paper are not comparable with those in previous editions**. Further detail can be found in House of Commons Library, [Unemployment by constituency: change in methodology 2013](#). Further changes are expected in future months.

## Seasonally adjusted and non-seasonally adjusted data

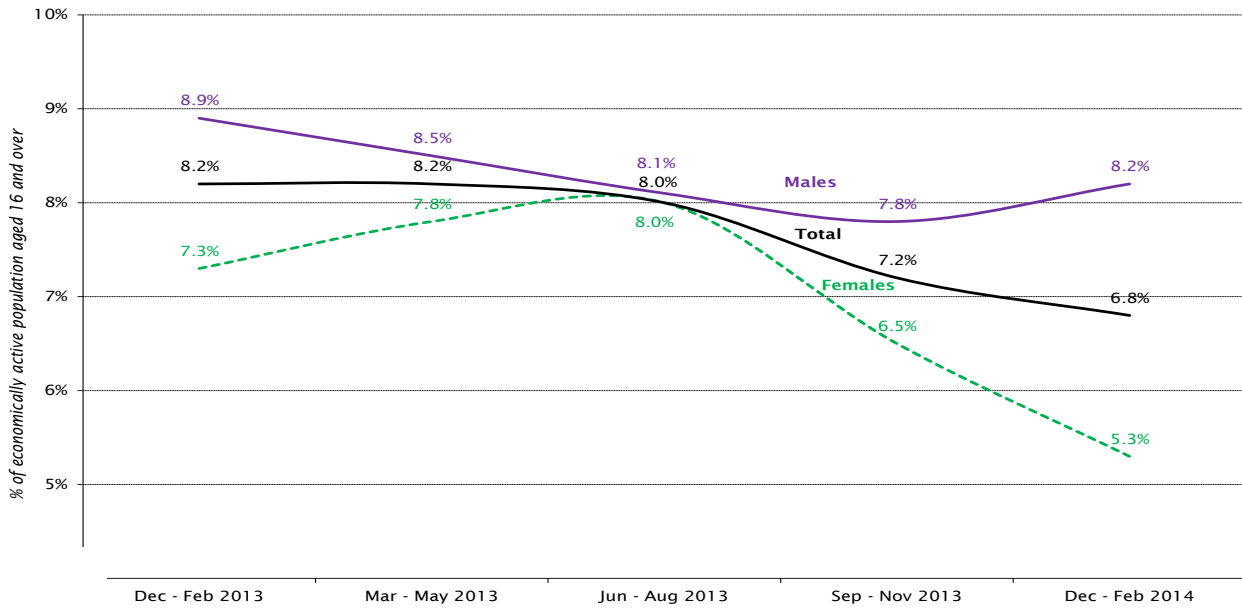
**Headline ILO unemployment and claimant count data for Wales and the other UK nations and regions is seasonally adjusted by the ONS**. This means that it is statistically adjusted to remove seasonal factors such as holidays and labour market recruitment patterns. For example, a large number of people leave full-time education and enter the labour market in the summer. To make it easier to identify labour market trends the ONS seasonally adjusts this data. **Other unemployment data such as that for age groups and Assembly Constituencies is not seasonally adjusted by the ONS**.



## 2. Unemployment rates in Wales

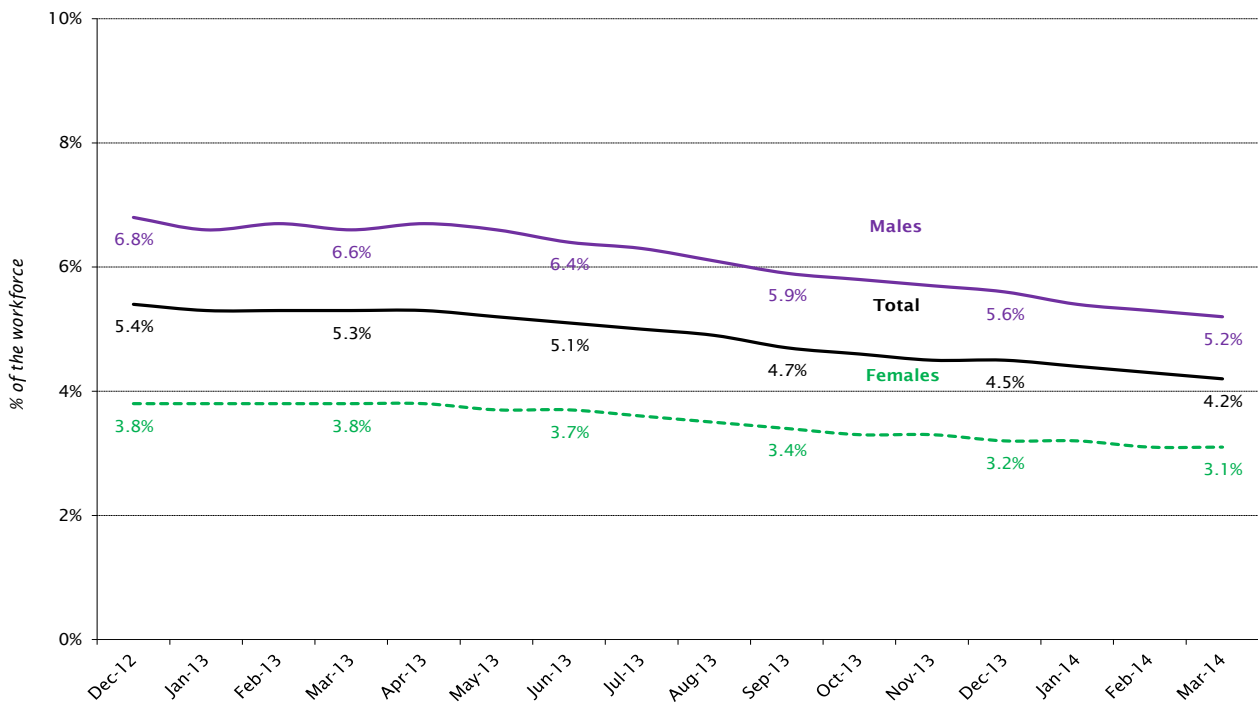
This section provides information on unemployment rates in Wales by gender for the two main measures of unemployment.

**Figure 2.1: ILO unemployment rates for Wales, by gender (seasonally adjusted)**



Source: Office for National Statistics, [Regional Labour Market Statistics – April 2014 Headline indicators for Wales: Table 1 – Summary of LFS headline indicators](#)

**Figure 2.2: Claimant count rates for Wales, by gender (seasonally adjusted)**

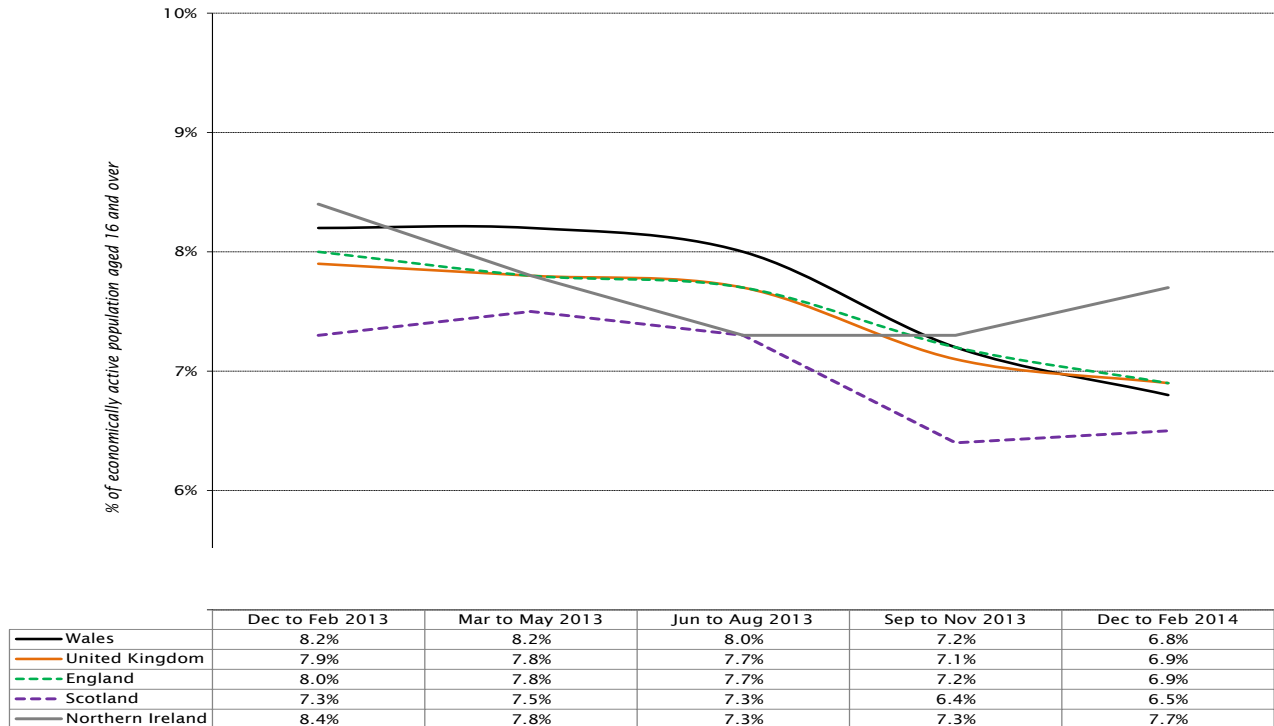


Source: Office for National Statistics, [Claimant Count and Vacancies Series](#)

### 3. Unemployment statistics for UK nations

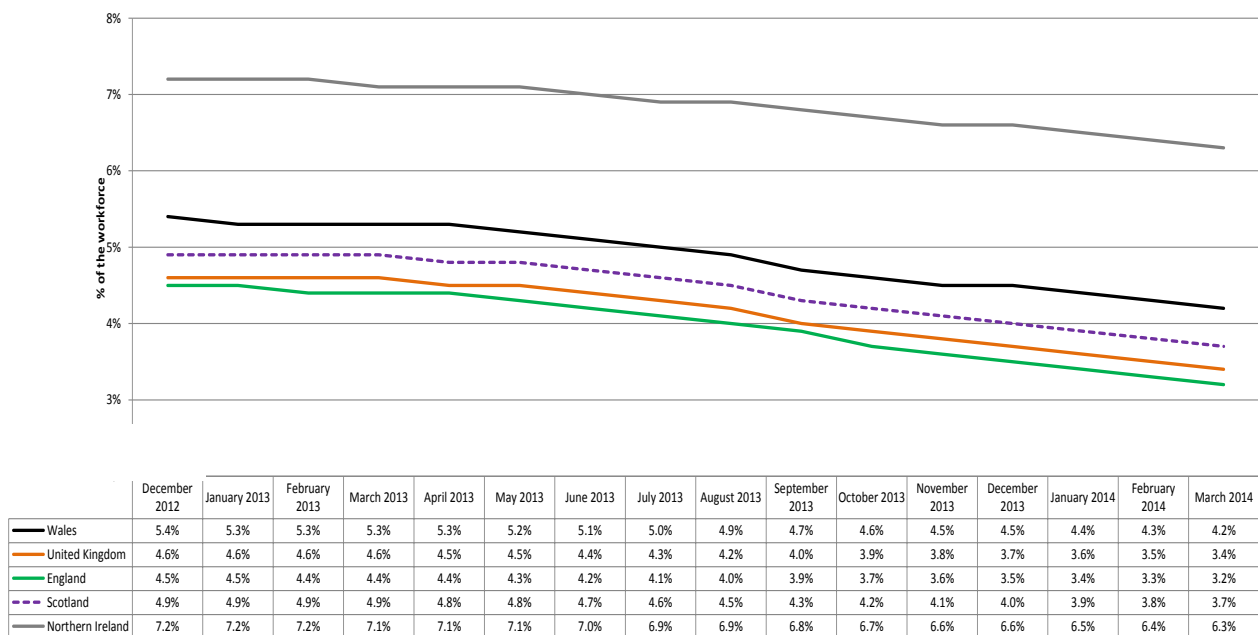
This section provides comparative information on unemployment rates in Wales and the UK nations for the two main measures of unemployment.

**Figure 3.1: ILO unemployment rates for UK nations, seasonally adjusted**



Source: Office for National Statistics, [Regional Labour Market Statistics – April 2014 Summary of headline indicators – Table 1](#) and Stats Wales, [ILO Unemployment rates by UK country/English region](#)

**Figure 3.2: Claimant count rates for UK nations**

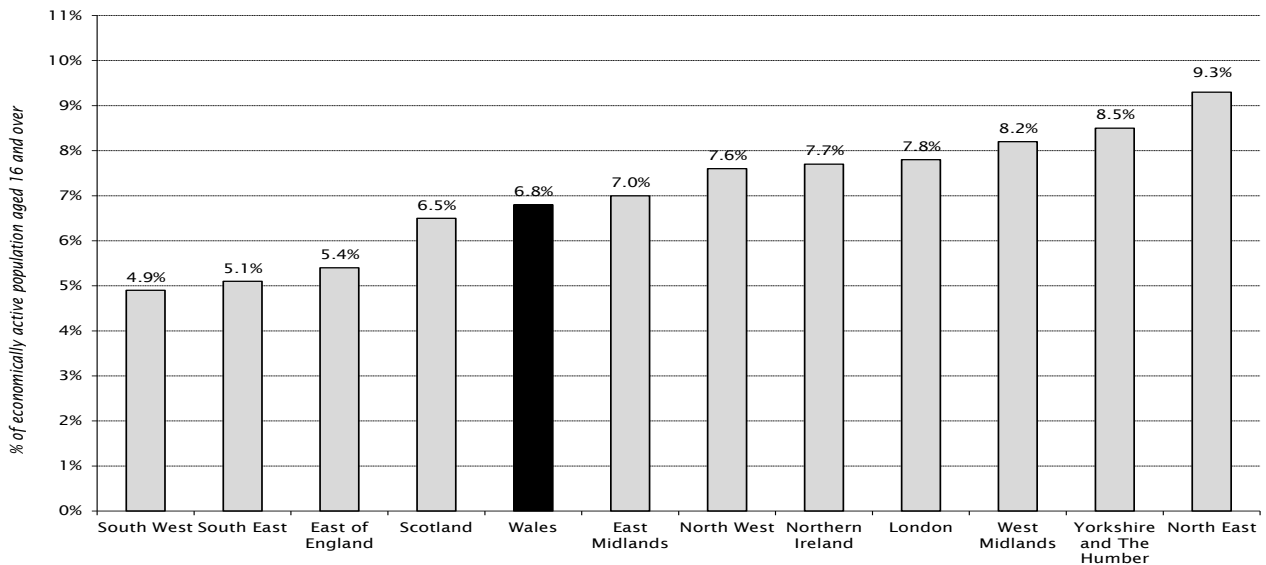


Source: Office for National Statistics, [Claimant Count and Vacancies Series](#)

## 4. Unemployment rates in UK regions and nations

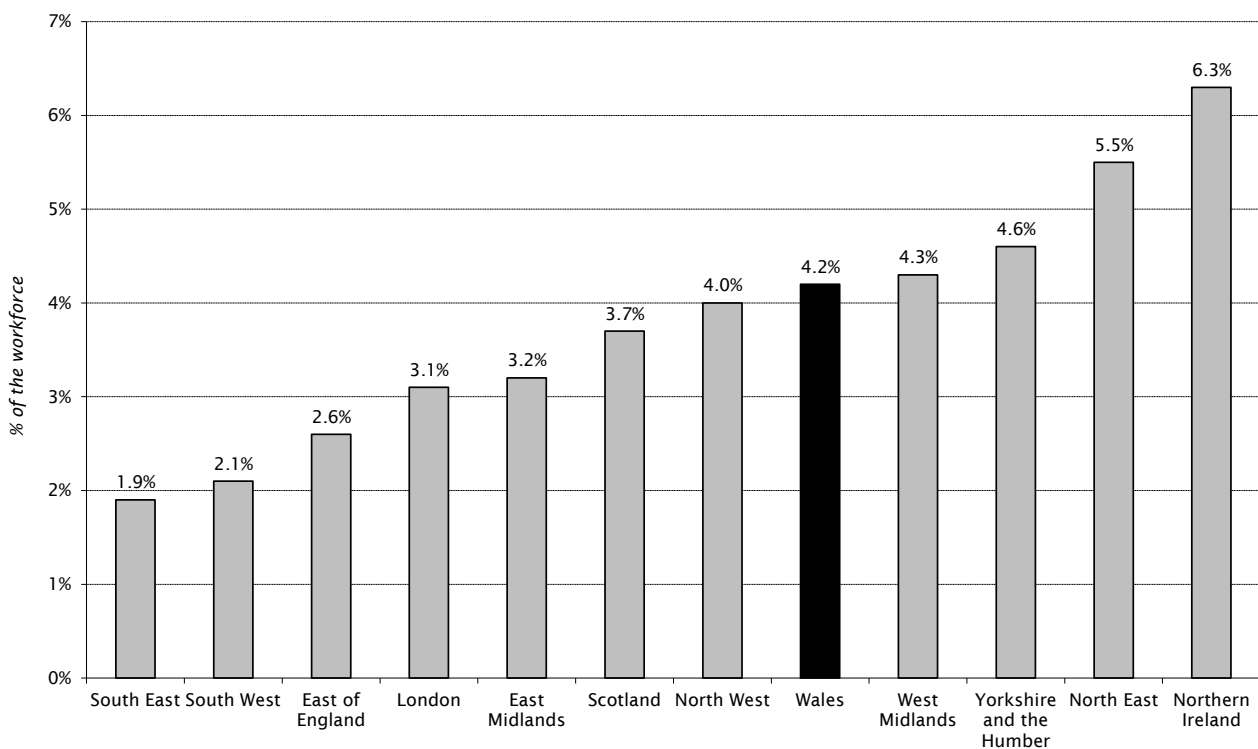
This section provides information on the latest unemployment rates in Wales compared to the UK nations and regions for the two main unemployment measures.

**Figure 4.1: ILO unemployment rates (December 2013 to February 2014) (seasonally adjusted)**



Source: Office for National Statistics, [Regional Labour Market Statistics – April 2014 Summary of headline indicators – Table 1](#)

**Figure 4.2: Claimant count rates (March 2014) (seasonally adjusted)**



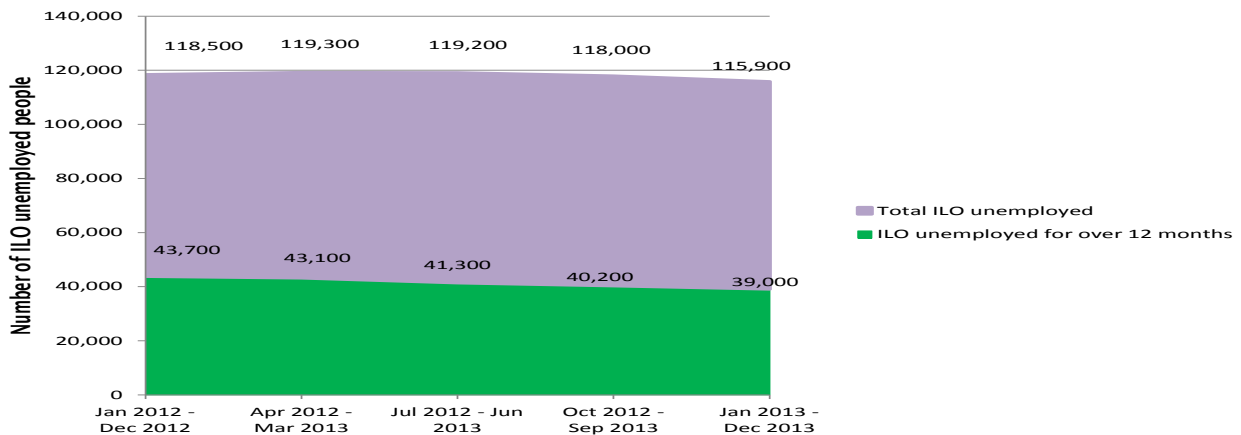
Source: Office for National Statistics, [Regional Labour Market Statistics – April 2014 Summary of headline indicators – Table 2](#)

## 5. Long-term unemployment in Wales

This section provides analysis of the number of people that are classed as long-term unemployed for both main measures of unemployment.

Statistics relating to the duration of unemployment using the ILO measure are published by the Welsh Government. This data is available on a rolling twelve-monthly basis, updated once a quarter.

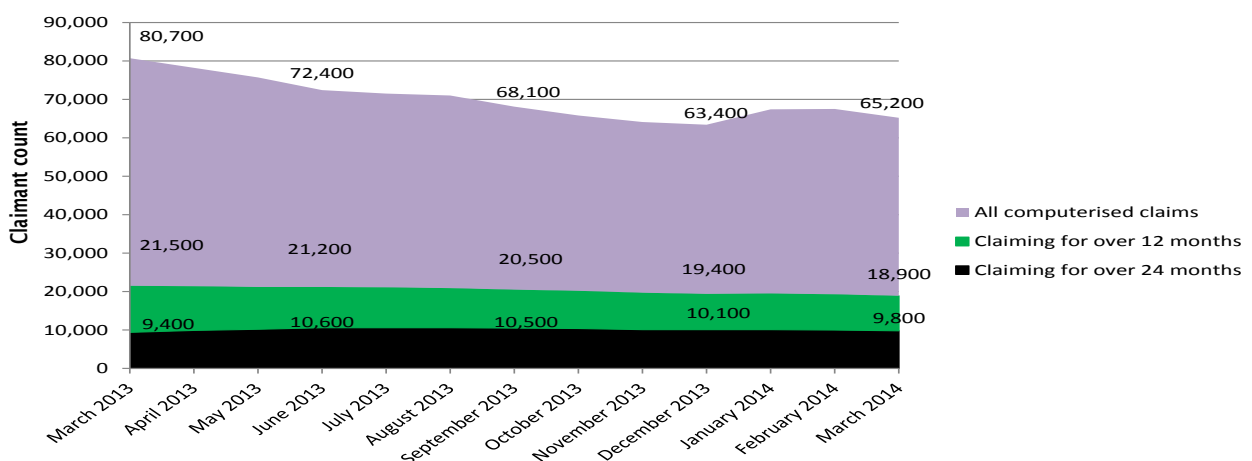
**Figure 5.1: ILO unemployment in Wales by duration of unemployment (not seasonally adjusted)**



Source: Stats Wales, [Long Term Unemployment by Area and Year](#)

The ONS publishes data to show the number of JSA claimants that have been claiming for over 12 and 24 months. The figures for those claiming JSA for over 12 months include those claiming for over 24 months. **These figures are not seasonally adjusted, and are for computerised claims as only these claims are analysed by the ONS in terms of duration. For these reasons comparisons cannot be made with the claimant count statistics in the other sections of this paper.**

**Figure 5.2: Claimant count in Wales by duration of computerised claims (not seasonally adjusted)**



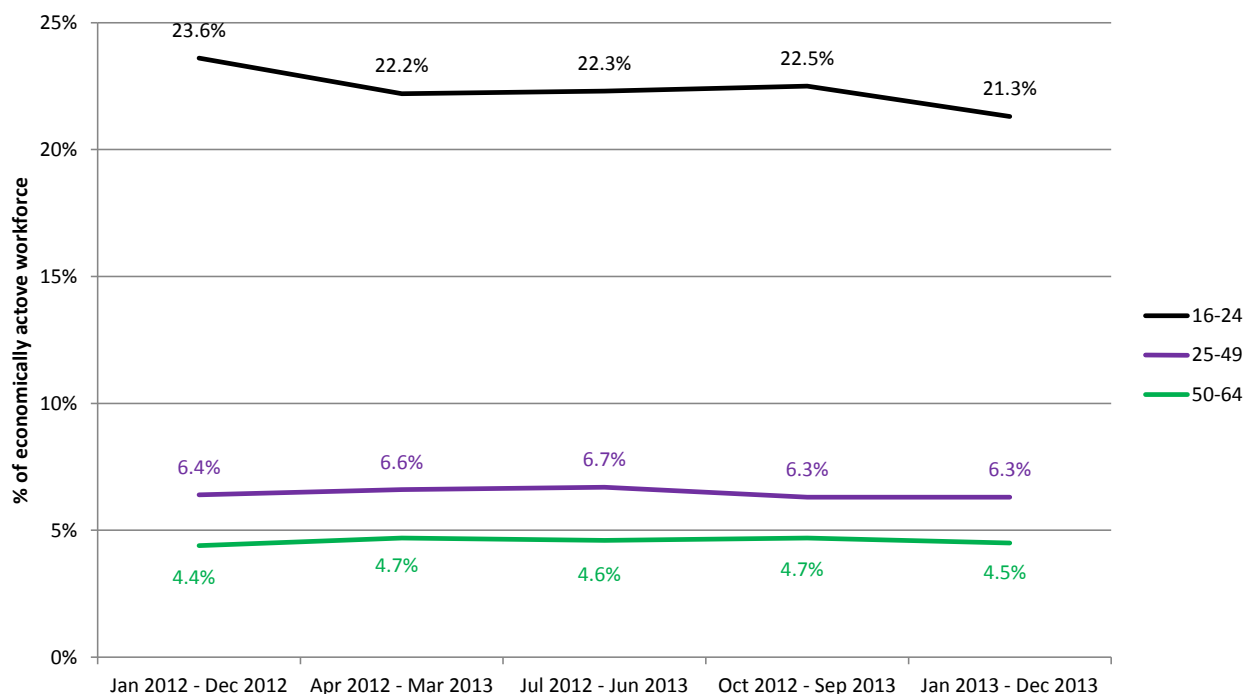
Source: Office for National Statistics, [Regional Labour Market Statistics – April 2014 Headline indicators for Wales: Table 8 – Claimant Count by Age and Duration \(Computerised claims only\)](#)

## 6. Unemployment by age group

This section of the paper gives information on the number and percentage of unemployed people in Wales for the two main measures of unemployment, by age group.

The sample based nature of the Labour Force Survey means that ILO unemployment statistics for different age groups and areas within Wales such as Assembly Constituencies are not available on a rolling three-monthly basis. This data is available on a rolling twelve-monthly basis, updated once a quarter.

**Figure 6.1: ILO unemployment rates by age group (not seasonally adjusted)**



Source: Office for National Statistics, [NOMIS Official Labour Market Statistics](#)

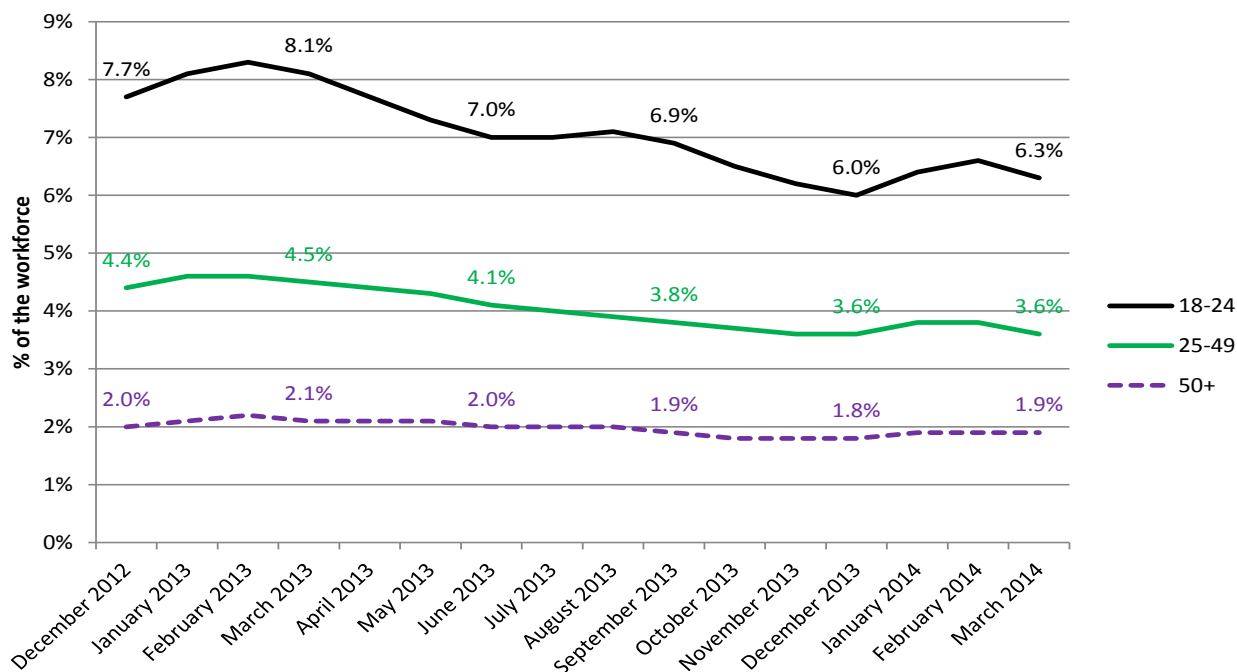
**Table 6.1: Number of ILO unemployed people by age group (not seasonally adjusted)**

	Age group (years)		
	16-24	25-49	50-64
Jan 2012 - Dec 2012	50,000	50,700	16,900
Apr 2012 - Mar 2013	47,000	53,500	17,900
Jul 2012 - Jun 2013	46,900	53,700	17,500
Oct 2012 - Sep 2013	48,400	50,700	18,100
Jan 2013 - Dec 2013	45,800	51,800	17,400

Source: Office for National Statistics, [NOMIS Official Labour Market Statistics](#)

Claimant count rates by age group are calculated by the Office for National Statistics as a percentage of the population, and do not take into account whether people are economically active or not. They are also not seasonally adjusted, and so are not comparable with the claimant count rates in the rest of the paper.

Figure 6.2: Claimant count rate by age group (not seasonally adjusted)



Source: Office for National Statistics, [NOMIS Official Labour Market Statistics: Labour Market Profile Wales](#)

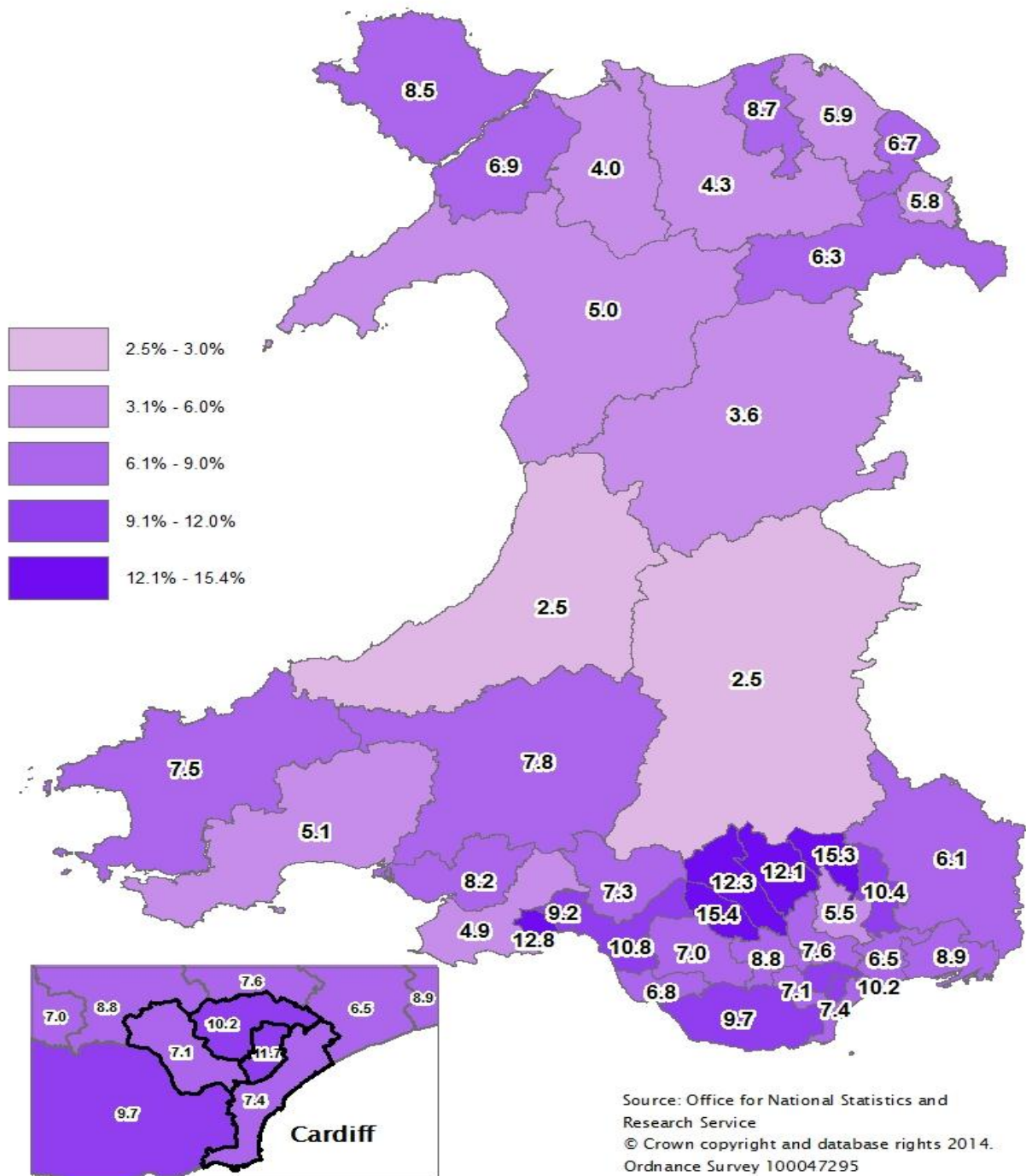
Table 6.2: Number of people claiming Jobseekers Allowance, by age group (not seasonally adjusted)

	18-24	25-49	50+
December 2012	23,125	42,280	11,870
January 2013	24,270	44,360	12,495
February 2013	25,020	44,865	12,720
March 2013	24,290	43,815	12,530
April 2013	23,050	42,685	12,410
May 2013	22,005	41,505	12,120
June 2013	20,875	39,665	11,770
July 2013	21,070	38,785	11,580
August 2013	21,235	38,150	11,575
September 2013	20,575	36,475	11,045
October 2013	19,630	35,305	10,790
November 2013	18,655	34,615	10,750
December 2013	18,115	34,530	10,745
January 2014	19,305	36,540	11,520
February 2014	19,710	36,285	11,485
March 2014	18,890	35,150	11,115

Source: Office for National Statistics, [NOMIS Official Labour Market Statistics: Labour Market Profile Wales](#)

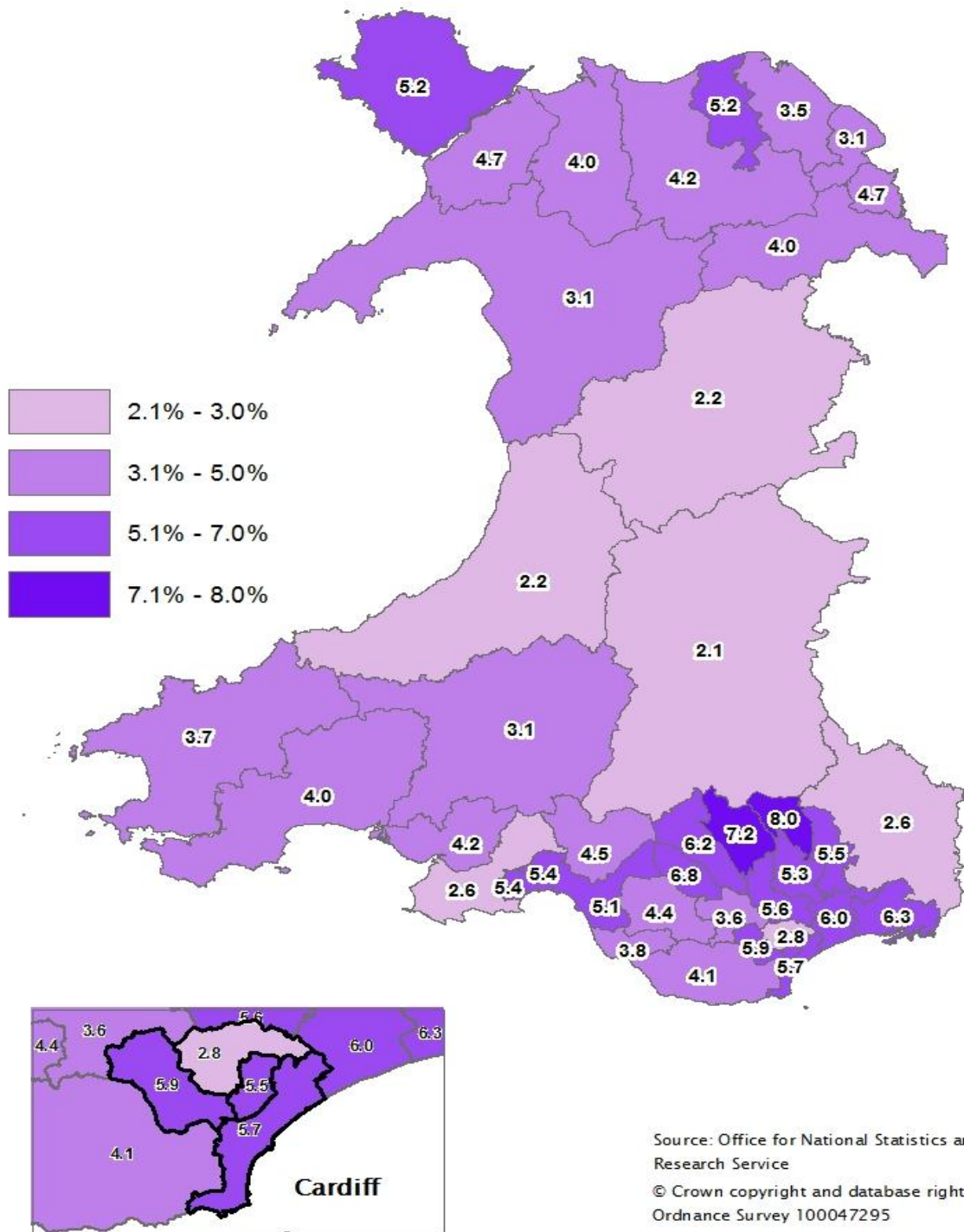
## 7: Unemployment statistics for Assembly Constituencies

Map 7.1: ILO unemployment rates by Assembly constituency (January to December 2013)<sup>1</sup>



<sup>1</sup> Latest available data (not seasonally adjusted). The rate is the number of ILO unemployed persons as a percentage of the economically active population aged 16 and over.

Map 7.2: Unofficial claimant count rates by Assembly Constituency, March 2014<sup>2</sup>



<sup>2</sup> Source: Research Service. Claimants of Job Seekers Allowance as a **percentage** of the economically active population aged between 16 and 64. See page 4 for details.



The tables in this section of the paper show the latest figures for the number and percentage of unemployed people in Assembly Constituencies for the two main measures of unemployment, and also the ranking of each Constituency's unemployment rate.

**Table 7.1: ILO unemployment numbers, rates and rank by Assembly Constituency, January – December 2013 (not seasonally adjusted) (a)**

<b>Constituency</b>	<b>Number ILO unemployed</b>	<b>ILO unemployment rate</b>	<b>Constituency rank for ILO unemployment rate</b>
Aberavon	3,337	10.8	7
Aberconwy	937	4.0	37
Alyn and Deeside	2,861	6.7	26
Arfon	1,969	6.9	24
Blaenau Gwent	4,790	15.3	2
Brecon and Radnorshire	807	2.5	39
Bridgend	2,743	6.8	25
Caerphilly	3,294	7.6	18
Cardiff Central	4,482	11.7	6
Cardiff North	5,168	10.2	9
Cardiff South and Penarth	4,135	7.4	20
Cardiff West	4,119	7.1	22
Carmarthen East and Dinefwr	2,614	7.8	17
Carmarthen West and South Pembrokeshire	1,669	5.1	33
Ceredigion	851	2.5	39
Clwyd South	2,395	6.3	28
Clwyd West	1,491	4.3	36
Cynon Valley	3,770	12.3	4
Delyn	1,994	5.9	30
Dwyfor Meirionnydd	1,414	5.0	34
Gower	1,645	4.9	35
Islwyn	1,986	5.5	32
Llanelli	3,083	8.2	16
Merthyr Tydfil and Rhymney	3,804	12.1	5
Monmouth	2,461	6.1	29
Montgomeryshire	1,199	3.6	38
Neath	2,454	7.3	21
Newport East	3,187	8.9	12
Newport West	2,615	6.5	27
Ogmore	2,381	7.0	23
Pontypridd	3,689	8.8	13
Preseli Pembrokeshire	2,699	7.5	19
Rhondda	5,061	15.4	1
Swansea East	3,730	9.2	11
Swansea West	4,726	12.8	3
Torfaen	3,998	10.4	8
Vale of Clwyd	2,885	8.7	14
Vale of Glamorgan	4,700	9.7	10
Wrexham	2,083	5.8	31
Ynys Mon	2,748	8.5	15

Source: Office for National Statistics, [Regional Labour Market Statistics – April 2014: Table LI02 Local Indicators for Parliamentary Constituencies](#)

Note:

- (a) The Assembly Constituency with the highest ILO unemployment rate is ranked as 1, and the Assembly Constituency with the lowest ILO unemployment rate is ranked as 40.

**Table 7.2: Claimant count and unofficial residence-based claimant count rates and rank by Assembly Constituency, March 2014 (not seasonally adjusted) (a), (b)**

<b>Constituency</b>	<b>Claimant count</b>	<b>Claimant count rate</b>	<b>Constituency rank for claimant count rate</b>
Aberavon	1,519	5.1	17
Aberconwy	1,053	4.0	25
Alyn and Deeside	1,331	3.1	33
Arfon	1,328	4.7	19
Blaenau Gwent	2,541	8.0	1
Brecon and Radnorshire	654	2.1	40
Bridgend	1,447	3.8	28
Caerphilly	2,275	5.6	9
Cardiff Central	2,345	5.5	11
Cardiff North	1,214	2.8	35
Cardiff South and Penarth	3,063	5.7	8
Cardiff West	2,625	5.9	7
Carmarthen East and Dinefwr	967	3.1	34
Carmarthen West and South Pembrokeshire	1,398	4.0	27
Ceredigion	718	2.2	39
Clwyd South	1,418	4.0	26
Clwyd West	1,379	4.2	23
Cynon Valley	1,901	6.2	5
Delyn	1,206	3.5	31
Dwyfor Meirionnydd	854	3.1	32
Gower	946	2.6	36
Islwyn	1,902	5.3	14
Llanelli	1,538	4.2	22
Merthyr Tydfil and Rhymney	2,478	7.2	2
Monmouth	997	2.6	37
Montgomeryshire	684	2.2	38
Neath	1,500	4.5	20
Newport East	2,348	6.3	4
Newport West	2,476	6.0	6
Ogmore	1,559	4.4	21
Pontypridd	1,420	3.6	30
Preseli Pembrokeshire	1,293	3.7	29
Rhondda	2,030	6.8	3
Swansea East	2,024	5.4	13
Swansea West	1,881	5.4	12
Torfaen	2,117	5.5	10
Vale of Clwyd	1,653	5.2	15
Vale of Glamorgan	1,929	4.1	24
Wrexham	1,660	4.7	18
Ynys Mon	1,641	5.2	16

Source: Research Service and Office for National Statistics, [Regional Labour Market Statistics – April 2014: Table JSA02 Claimant count for Parliamentary Constituencies](#)

Note:

- (a) Claimants of Jobseekers Allowance as a percentage of the economically active population aged 16 to 64. See page 4 for details. **For Assembly Constituencies, the claimant count rates are calculated unofficially by the Research Service using the same methodology as the House of Commons Library.** They are calculated by expressing the number of JSA claimants as a percentage of the economically active population aged between 16 and 64 residing in the constituency. The population figures are estimates based on the 2011 Census. **Following publication of data from the 2011 Census this methodology has changed. Therefore the figures in this paper are not comparable with those in previous editions.** Further detail can be found in House of Commons Library, [Unemployment by constituency: change in methodology 2013](#).
- (b) The Assembly Constituency with the highest claimant count rate is ranked as 1, and the Assembly Constituency with the lowest claimant count rate is ranked as 40.