

Research Briefing Labour Market Briefing

Author: **Gareth Thomas**
Date: **May 2016**



National Assembly for Wales
Research Service

A photograph of a person's hand holding a pen over an application form. The form is titled 'Application Form' and includes sections for 'EMPLOYMENT OPPORTUNITY' and 'FILL IN FOR...'. The form contains various fields for personal information, including name, address, contact details, and a section for 'EMPLOYMENT OPPORTUNITY' with a warning about discrimination. The form is on a clipboard, and the background shows a desk with a plant, a pen, and a notebook.

The National Assembly for Wales is the democratically elected body that represents the interests of Wales and its people, makes laws for Wales and holds the Welsh Government to account.

Author: **Gareth Thomas**

Date: **May 2016**

Paper Number: **16-022**

Contact Us

Research Service
National Assembly for Wales
Tŷ Hywel
Cardiff Bay
Cardiff
CF99 1NA

 : 0300 200 6312

 GarethDavid.Thomas@Assembly.Wales

 : Assembly.Wales/InBrief

 : [@SeneddResearch](https://twitter.com/SeneddResearch)

 : Assembly.Wales/Research

© National Assembly for Wales Commission Copyright 2016

The text of this document may be reproduced free of charge in any format or medium providing that it is reproduced accurately and not used in a misleading or derogatory context. The material must be acknowledged as copyright of the National Assembly for Wales Commission and the title of the document specified.

Research Briefing

Labour Market Briefing

This briefing paper provides a statistical overview of the labour market.

Information is included on Assembly constituencies, Wales and UK nations and regions.



Labour Market Briefing

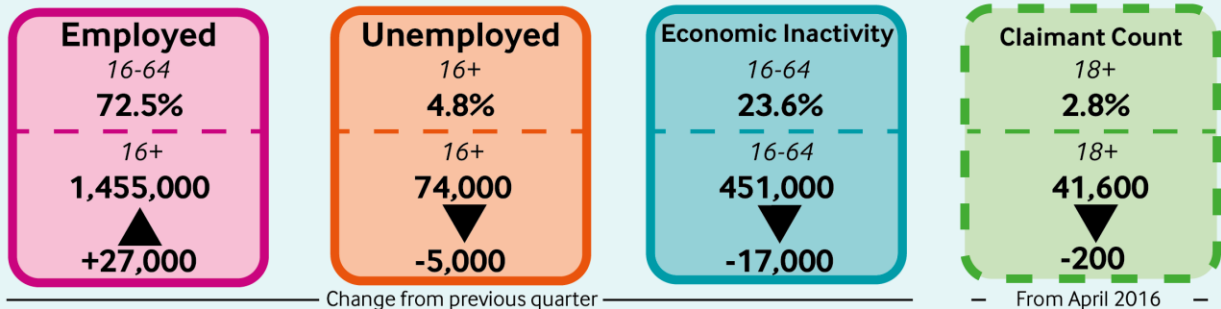
Labour market statistics are published each month by the Office for National Statistics (ONS). This paper is released shortly after the ONS data and aims to provide a brief summary of the latest situation across the labour market in Wales and the UK.

This paper includes comparative information on unemployment, employment and economic inactivity rates in Wales and the other UK nations. Additionally, the latest headline labour market figures for Welsh constituencies are provided.

The Research Service is able to provide **Assembly Members and their staff** with more detailed analyses in relation to unemployment and long-term labour market trends on request. If you would like us to do this, please contact Gareth Thomas on 0300 200 6307 or at GarethDavid.Thomas@assembly.wales



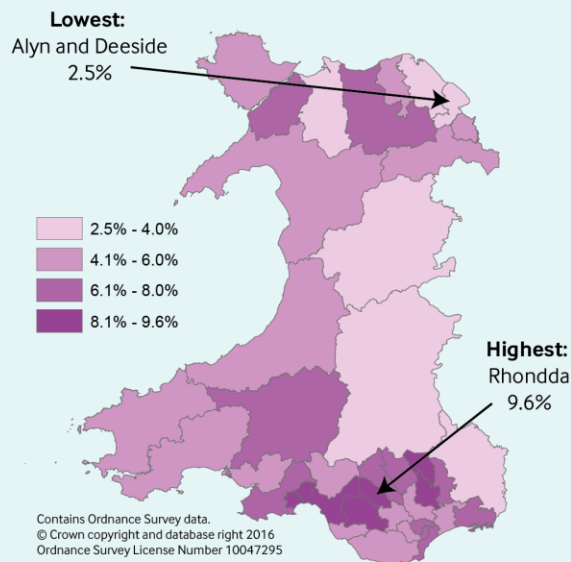
HEADLINE STATISTICS FOR WALES



ILO UNEMPLOYMENT IN WALES

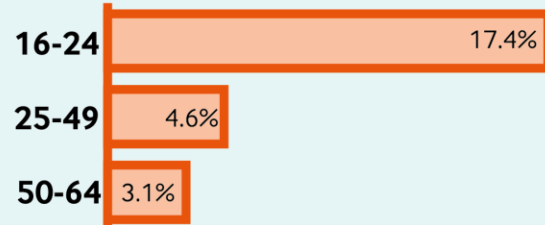
By Constituency

For 12 months to December 2015

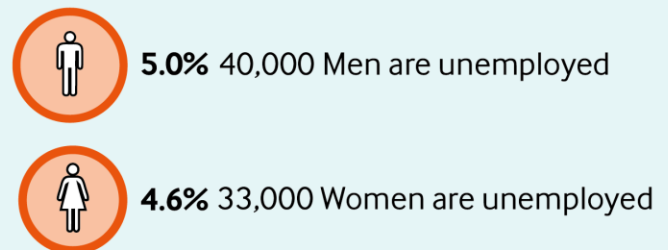


By Age Group

For 12 months to December 2015



By Gender

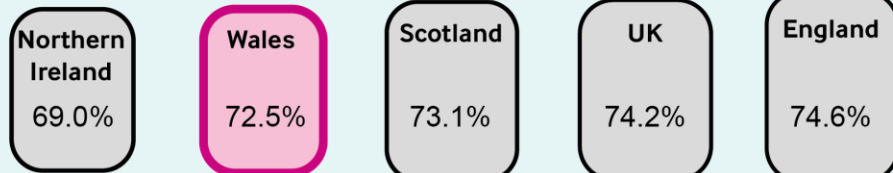


ILO UNEMPLOYMENT RATE - UK NATIONS



WORKING AGE EMPLOYMENT RATE - UK NATIONS

Percentage of
people aged
16-64 who are
employed



Definitions of key terms relating to being in and out of work

When the Office for National Statistics (ONS) publishes statistics on the labour market, people are classed as being in one of three groups. **These are being in employment, being unemployed or being economically inactive.**

- **People in employment** are those aged 16 and over who did paid work (as an employee or self-employed), those who had a job that they were temporarily away from, those on government-supported training and employment programmes, and those doing unpaid family work;
- **People who are classed as ILO unemployed** are those aged 16 and over who are without a job, have been actively seeking work in the past four weeks and are available to start work in the next two weeks, or are out of work and are waiting to start a new job in the next two weeks; and
- **People who are classed as being economically inactive** are those aged 16 and over without a job who have not sought work in the last four weeks and/or are not available to start work in the next two weeks. The main economically inactive groups are students, people looking after families and the home, temporary and long-term sick and disabled people, and retired people.

There are two main measures of unemployment used by the ONS. In addition to the ILO measure outlined above, **the claimant count measures people who are claiming Jobseeker's Allowance (JSA) and Universal Credit.** It is lower than the ILO definition, because some unemployed people are either not entitled to claim benefits, or choose not to do so. **It is the most up-to-date unemployment measure.**

To take into account the differences between the number of people in different age groups and geographical areas, **the figures in this paper are mainly expressed as rates** rather than the number of people.

Seasonally adjusted and non-seasonally adjusted data

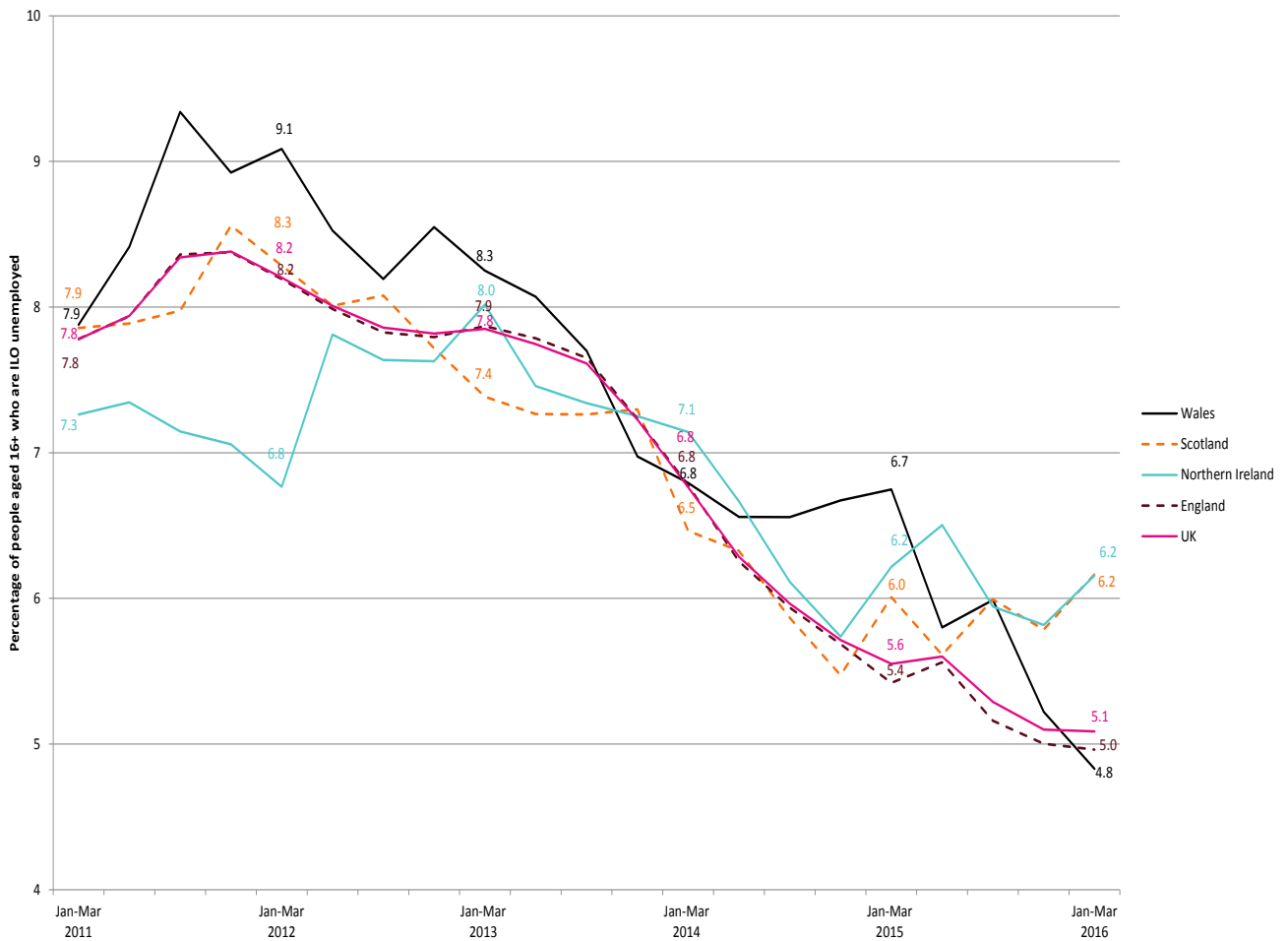
Headline ILO unemployment and claimant count data for Wales and the other UK nations and regions is seasonally adjusted by the ONS. This means that it is statistically adjusted to remove seasonal factors such as holidays and labour market recruitment patterns. For example, a large number of people leave full-time education and enter the labour market in the summer. To make it easier to identify labour market trends the ONS seasonally adjusts this data. **Other unemployment data such as that for age groups and Parliamentary Constituencies is not seasonally adjusted by the ONS.**

1. Unemployment in Wales

This section provides headline information on ILO unemployment rates and the claimant count across the UK. It also looks at unemployment by age. Key points from this section of the briefing include:

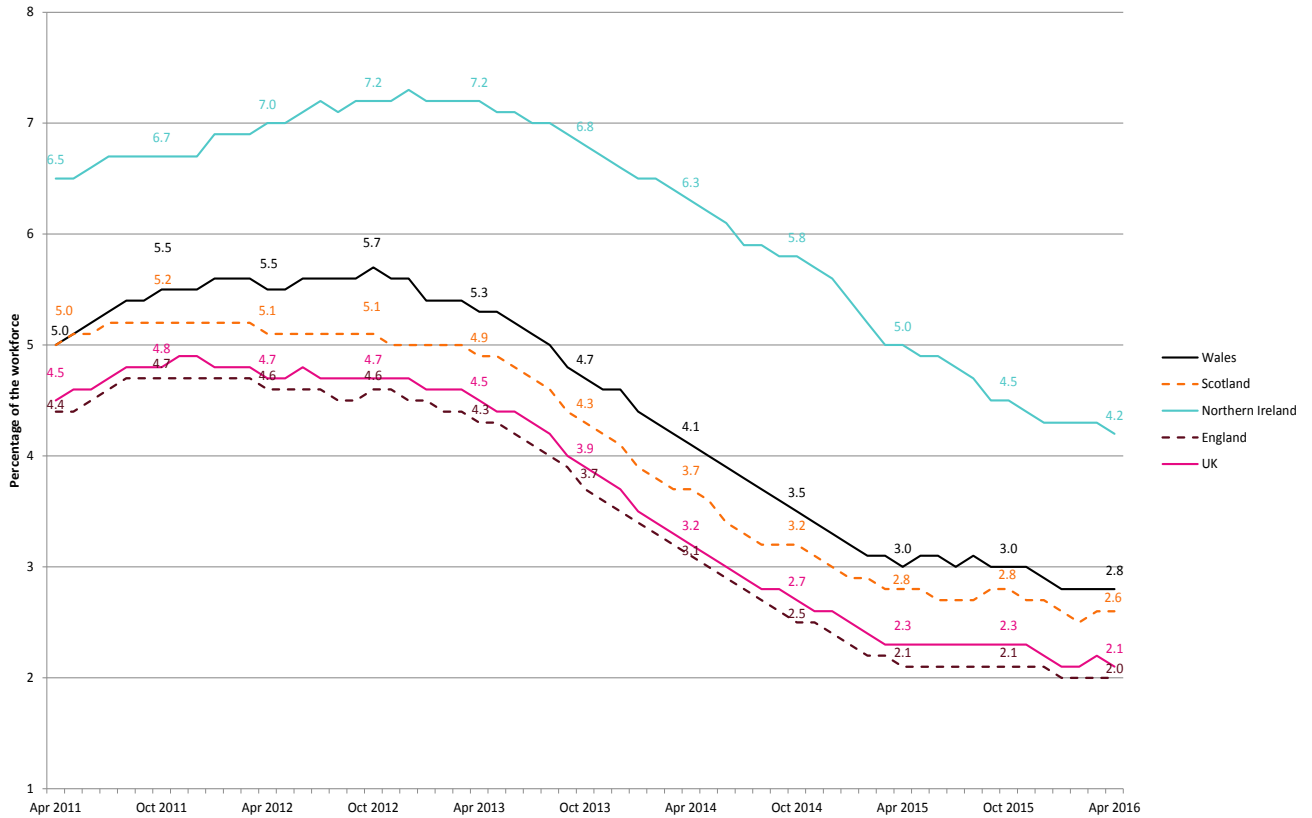
- The latest figures show that the ILO unemployment rate in Wales is **4.8% in January - March 2016**, the lowest rate of the UK nations and the lowest since 2008. (figure 1.1);
- The **claimant count rate** has seen a decrease across Wales and the other UK nations over the past three years. Wales' claimant count rate has been below only Northern Ireland for this period (figure 1.2);
- **Youth unemployment rates** across Wales are higher than for other age groups, and have remained constant at 17.4% in January – December 2014 and 2015. (figure 1.3);
- Looking across the constituencies, **Rhondda** has the highest ILO unemployment rate at 9.6%, with **Alyn and Deeside** having the lowest at 2.5% in January – December 2015.
- For the 'unofficial' claimant count statistics calculated by the Research Service, **Blaenau Gwent** had the highest rate at 5.5% in April 2016, with **Brecon and Radnorshire** having the lowest at 1.2%.

Figure 1.1: ILO unemployment rate in Wales and other UK nations (seasonally adjusted)



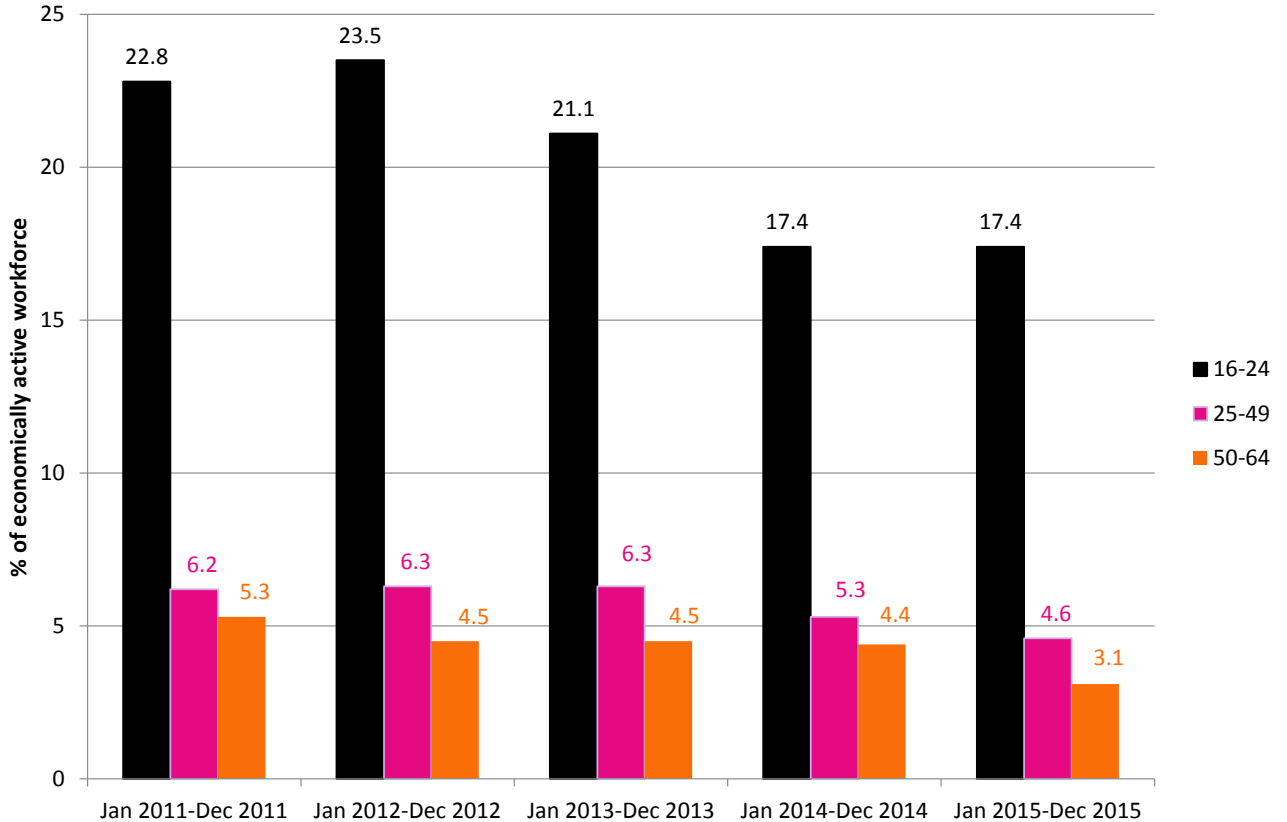
Source: Office for National Statistics, **Regional Labour Market Statistics – May 2016 Headline indicators for all regions** and **Labour Market Statistics – May 2016 Summary of Labour Market Statistics**

Figure 1.2: Claimant count rate in Wales and other UK nations (seasonally adjusted)



Source: Office for National Statistics, **Claimant Count and Vacancies Series**

Figure 1.3: ILO unemployment rate in Wales by age (not seasonally adjusted)



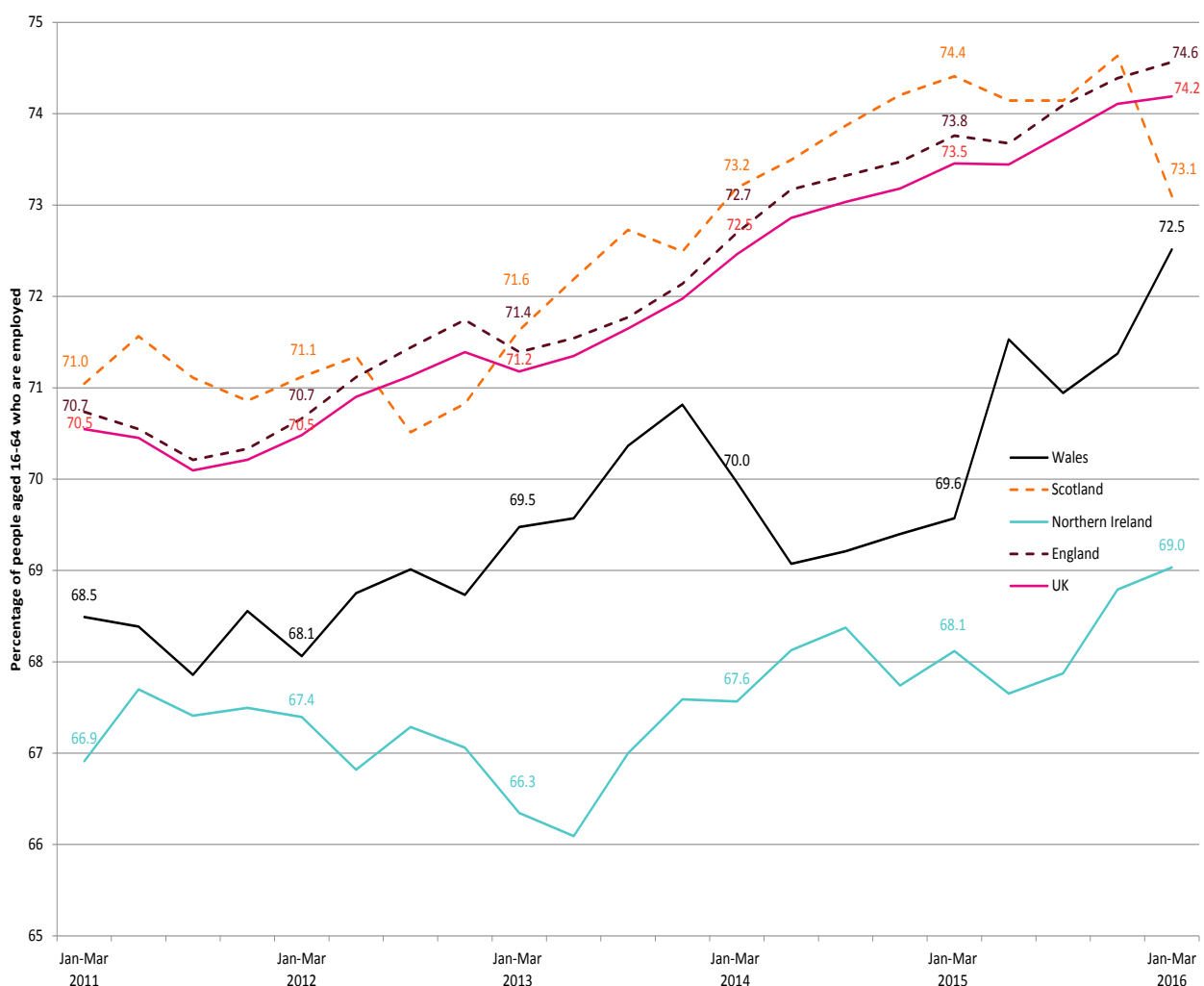
Source: Office for National Statistics, **NOMIS Official Labour Market Statistics**

2. Employment and jobs

This part of the paper looks at employment rates across the UK for people of working age (16-64). It also considers changes in employment in the public and private sectors in Wales. The main conclusions that can be drawn from this section include:

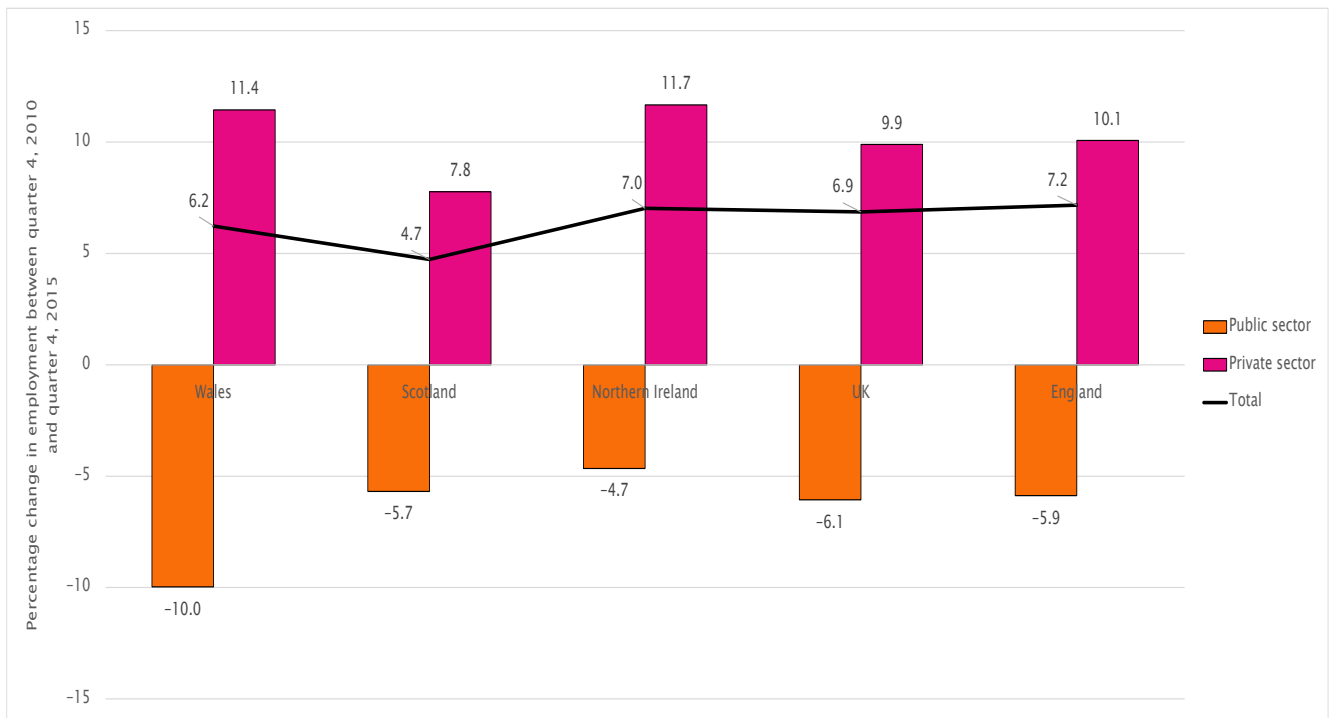
- The **working age employment rate** in Wales has increased over the past five years, with the current rate being a record high of 72.5% in January – March 2016. (figure 2.1);
- **Over the past five years the working age employment rate in Wales has been above Northern Ireland, but below the other UK nations.**
- Over the past five years to quarter 4 of 2015, **employment in the private sector** in Wales has increased by 11.4%, while **employment in the public sector** has decreased by 10% (figure 2.2); and
- Looking at the constituency data, 77.6% of people aged 16-64 in **Montgomeryshire** are in work in January – December 2015, the highest rate of the Welsh constituencies. In **Cardiff Central**, 60.3% of 16-64 year olds are working, the lowest rate of any of the Welsh constituencies.

Figure 2.1: Working age employment rate in Wales and other UK nations (seasonally adjusted)



Source: Office for National Statistics, **Regional Labour Market Statistics – May 2016 Headline indicators for all regions** and **Labour Market Statistics – May 2016 Summary of Labour Market Statistics**

Figure 2.2: Percentage change in employment in public and private sectors over past five years (not seasonally adjusted)



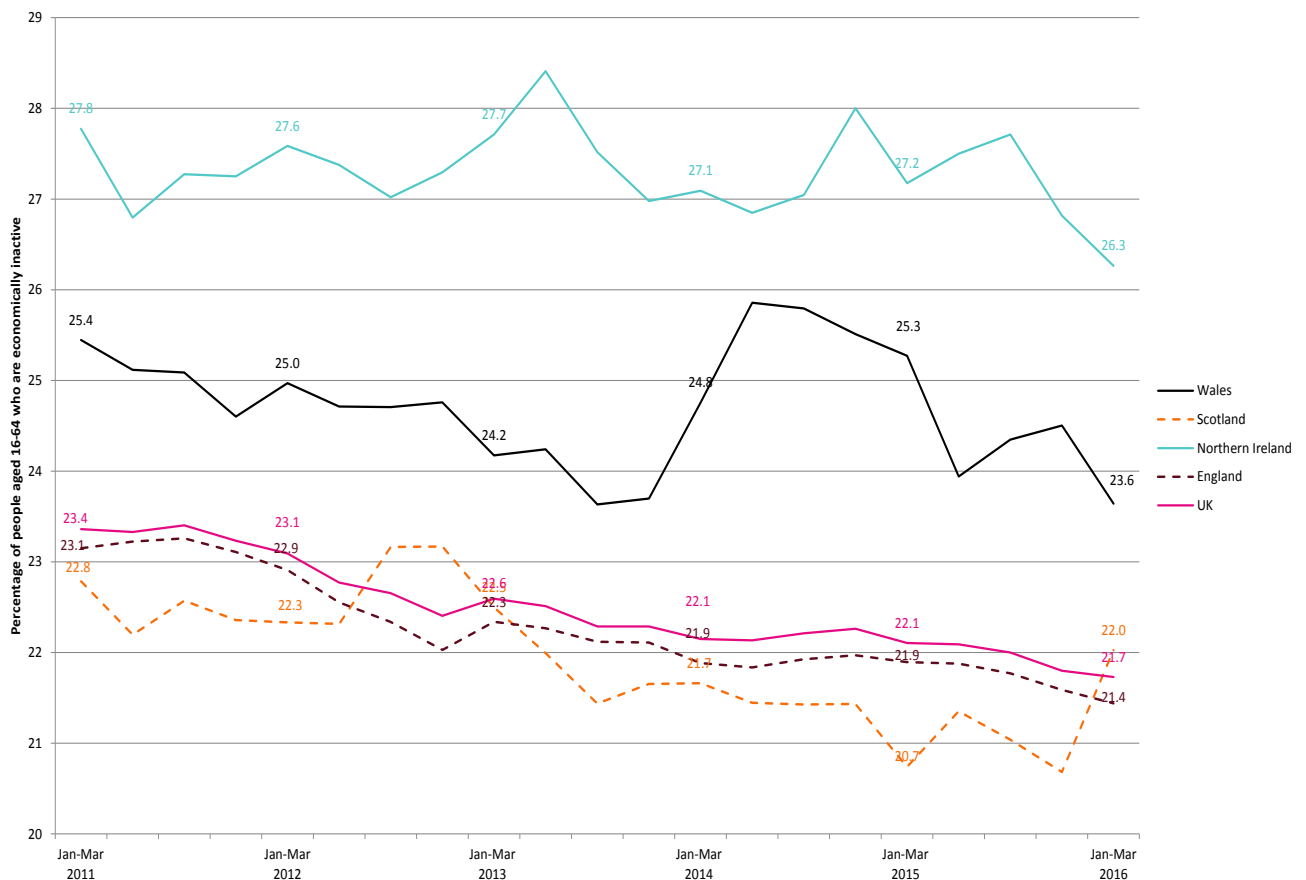
Source: Office for National Statistics, [Public Sector Employment, Quarter 4 2015](#)

3.Economic Inactivity

This part of the paper looks at people outside the labour market, those who are classed as being economically inactive. This includes people aged 16-64 without a job who have not sought work in the last four weeks and/or are not available to start work in the next two weeks. The graphs below consider the economic inactivity rate for people of working age across the UK, and look at the reasons why people in Wales are economically inactive. The key points from this section of the briefing are:

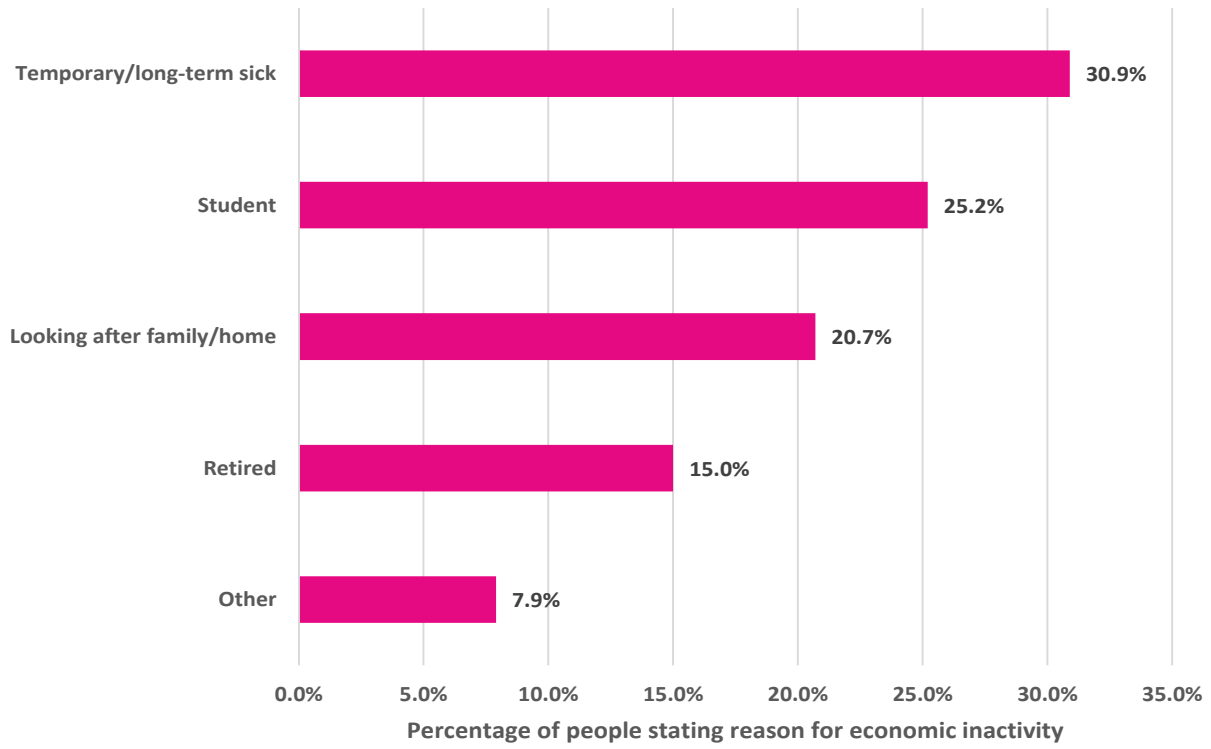
- **Wales has had a higher working age economic inactivity rate than the UK average throughout the past five years.** This has fluctuated over the past five years, and is 23.6% in January - March 2016 (figure 3.1);
- The main reasons given by economically inactive people in Wales in January – December 2015 were temporary and long-term sickness (30.9%), being a student (25.2%) and looking after the family/home (20.7%) (figure 3.2); and
- At constituency level, **Cardiff North** had the lowest working age economic inactivity rate in January – December 2015, at 17.4%, with **Cardiff Central** having the highest at 35.3%. This is partially due to the high number of university students living in Cardiff Central.

Figure 3.1: Working age economic inactivity in Wales and other UK nations (seasonally adjusted)



Source: Office for National Statistics, **Regional Labour Market Statistics – May 2016 Headline indicators for all regions** and **Labour Market Statistics – May 2016 Summary of Labour Market Statistics**

Figure 3.2: Reasons for working age economic inactivity in Wales, January – December 2015 (in %)



Source: Office for National Statistics, [Regional Labour Market Statistics – May 2016 Headline indicators for Wales](#)

4. What's happening in your constituency?

Table 4.1 sets out the latest headline labour market statistics for Welsh constituencies. The constituencies with the best performance for each variable are highlighted in gold, and the worst performing constituencies highlighted in grey.

Additional information on the labour market in your constituency including comparisons over time is available on the Research Service [constituency support pages](#).

Table 4.1: Headline labour market statistics by Welsh constituency, January – December 2015

Constituency	ILO unemployment rate 16+	Unofficial claimant count rate (Apr 2016)	Employment rate 16-64	Economic inactivity rate 16-64
Aberavon	9.0	3.8	61.2	32.6
Aberconwy	3.0	2.7	71.1	26.4
Alyn and Deeside	2.5	1.9	76.1	21.9
Arfon	6.1	3.5	68.9	26.4
Blaenau Gwent	9.3	5.5	64.9	28.3
Brecon and Radnorshire	3.1	1.2	75.9	21.5
Bridgend	5.4	2.6	75.0	20.6
Caerphilly	5.6	3.9	69.2	26.6
Cardiff Central	6.8	3.4	60.3	35.3
Cardiff North	7.3	1.7	76.6	17.4
Cardiff South and Penarth	7.6	3.5	65.0	29.5
Cardiff West	4.6	3.6	74.7	21.5
Cardiff South and Penarth	6.6	2.3	67.7	27.2
Carmarthen East and Dinefwr	4.1	2.8	73.4	23.1
Carmarthen West and South Pembrokeshire	4.2	1.5	64.3	32.7
Ceredigion	4.3	2.2	76.0	20.4
Clwyd South	7.0	2.6	71.3	23.0
Clwyd West	7.8	4.3	69.2	24.7
Cynon Valley	2.9	2.2	69.6	28.2
Delyn	5.4	1.7	69.8	25.9
Dwyfor Meirionnydd	7.0	1.9	71.4	23.1
Gower	8.3	3.9	66.5	27.3
Islwyn	5.7	3.0	71.2	24.4
Llanelli	7.6	4.5	65.8	28.7
Merthyr Tydfil and Rhymney	3.5	1.5	77.2	19.9
Monmouth	4.0	1.4	77.6	18.8
Montgomeryshire	5.1	3.2	69.7	26.5
Neath	7.5	4.0	70.1	24.1
Newport East	5.3	4.0	69.9	26.0
Newport West	8.2	3.1	68.8	24.9
Ogmore	4.5	2.4	73.4	23.1
Pontypridd	5.3	2.9	73.8	22.0
Preseli Pembrokeshire	9.6	5.0	64.4	28.5
Rhondda	9.0	3.9	68.3	24.9
Swansea East	8.5	4.1	66.5	27.2
Swansea West	6.4	3.4	71.1	23.9
Torfaen	5.1	3.4	68.5	27.7
Vale of Clwyd	4.4	2.7	73.1	23.3
Vale of Glamorgan	4.6	2.4	75.2	21.1
Wrexham	5.9	3.9	73.7	21.6
Ynys Mon				

Source: Office for National Statistics, [Regional Labour Market Statistics – May 2016: Table LI02 Local Indicators for Parliamentary Constituencies](#) and [Regional Labour Market Statistics – May 2016: Table CC02 Claimant Count for Parliamentary Constituencies \(experimental\)](#)